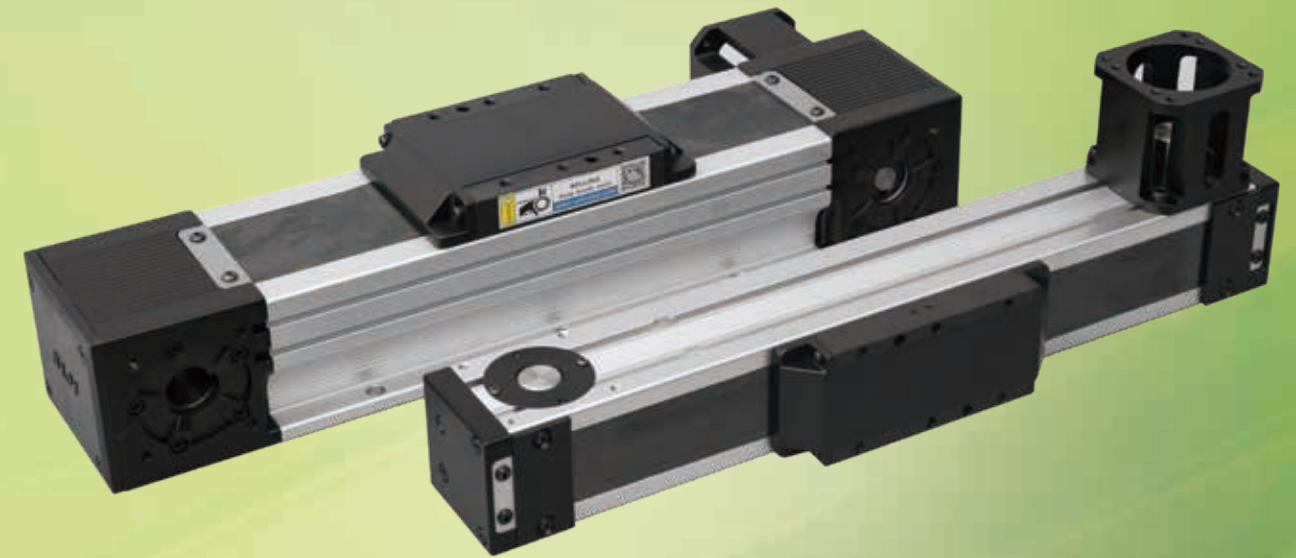




# LTROBOT

SLMP Linear Modules

## Motion The Future



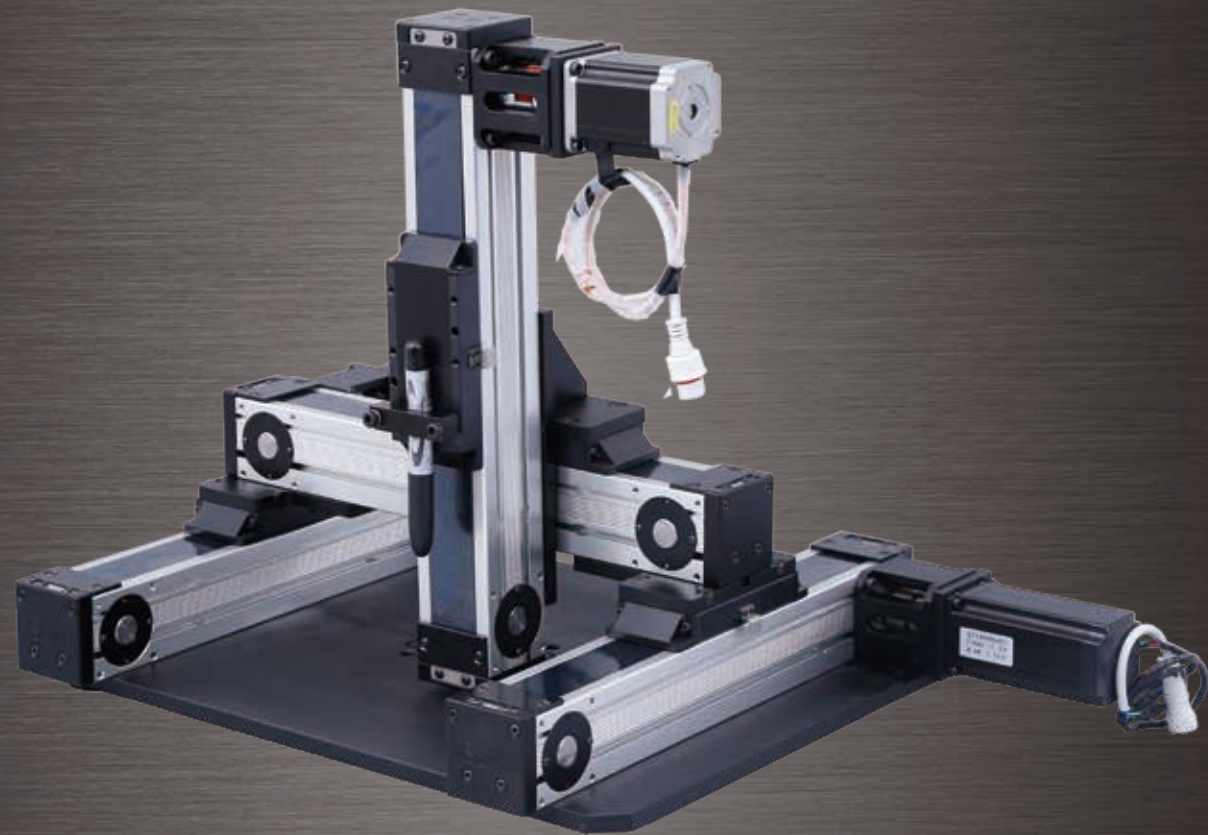
LTROBOT

Tel: +86-512-66317439

Address: 22-4 Que mei dongroad, Mudu town,  
wuzhong district, Suzhou, Jiangsu, China.

Website: [www.opalmotion.com](http://www.opalmotion.com)

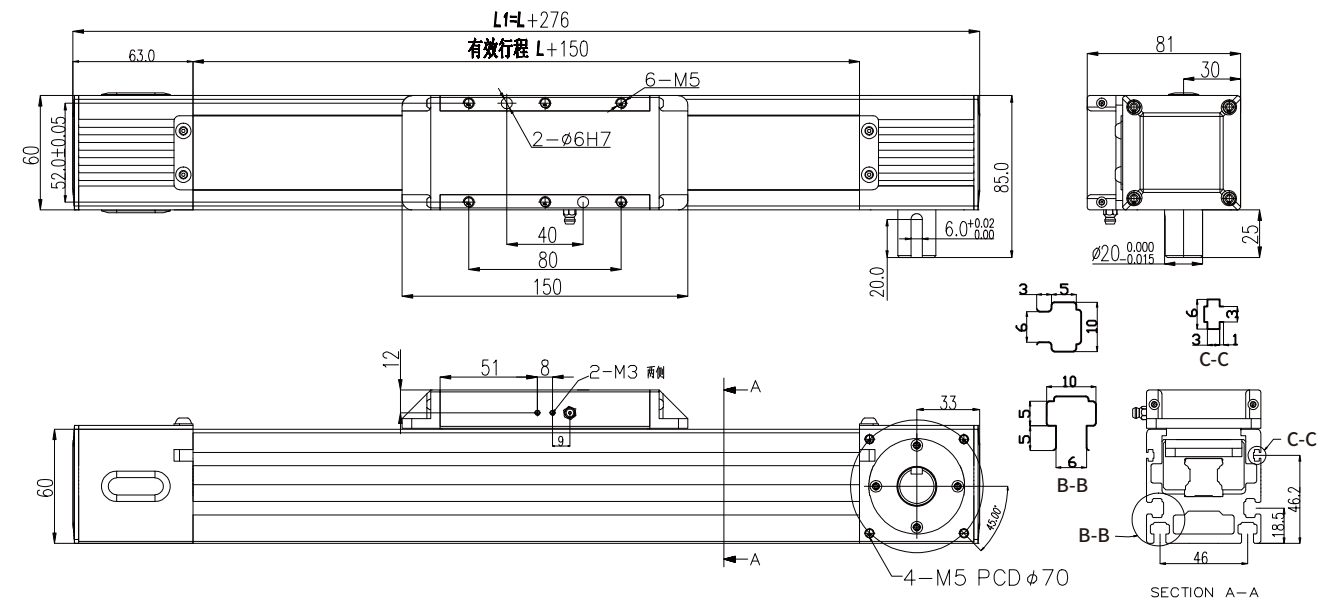
Email: [Linearguide@opalmotion.com](mailto:Linearguide@opalmotion.com)



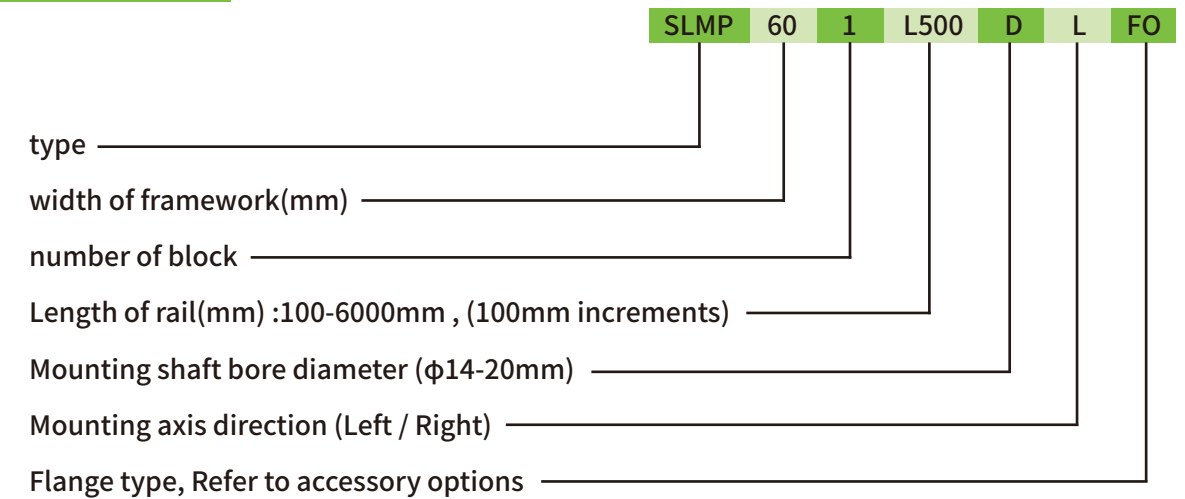
- High speed, self-lubricating
- Rigid structure, easy to design
- Standard product, high interchangeable
- Dust-proof, silent
- Good travel accuracy
- Easy installation

The SLM industrial robot integrates the ball screw and the linear slide through a modular design, so it can provide high precision, quick installation, selection, high rigidity, small size and space saving. The high-precision ball screw is used as the transmission mechanism to match the U-shaped track of the optimized design as the guiding mechanism to ensure the precision and rigidity.

SLMP60 Linear Modules



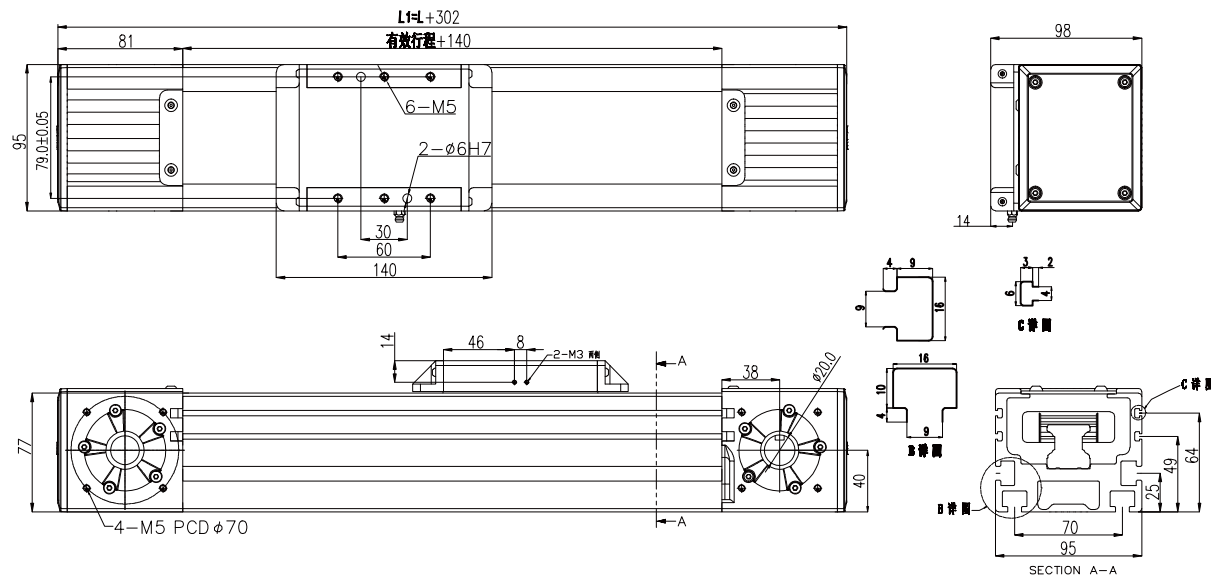
Order code for SLMP60



Product Specifications:	60mm*65mm
Driving power	≤400W
Pully lead	Every turn 125mm
Maximun speed	850mm/s
Maximun load	Dynamic max load: 23.96KN Static max load 30.87KN
Accuracy (mm)	±0.015 L≤1200mm
Length of rail	100≤L≤6000m
Load moment	MR:0.37KN-m MP:0.28KN-m MY:0.28KN-m
Base material	Hard extruded Aluminium, surface natural gloss treatm
Rail material	SG20 high moment ball linear guide
Belt type	Polyurethane steel wire HTD5M width 30
Mounting Accuracy	M≤0.1
Dust-proof design	Dust proofed

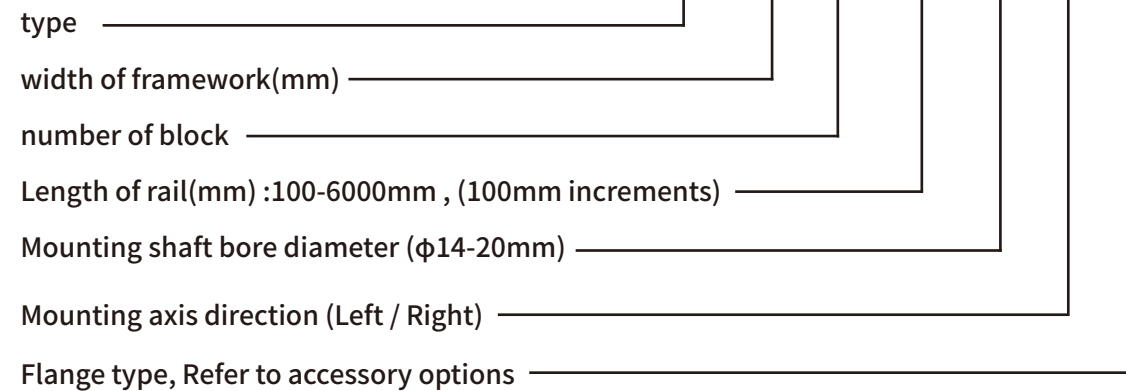


SLMP95 Linear Modules



Order code for SLMP95

SLMP 95 1 L500 D L FO



Driving power	95mm*98mm
Driving power	≤400W
Pully lead	Every turn 125mm
Maximun speed	850mm/s
Maximun load	Dynamic max load: 46.25KN Static max load 55.91KN
Accuracy (mm)	±0.01 L≤1200mm
Length of rail	100≤L≤6000m
Load moment	MR:0.95KN-m MP:0.7KN-m MY:0.7KN-m
Base material	Hard extruded Aluminium, surface natural gloss treatment
Rail material	SG30 high moment ball linear guide
Belt type	Polyurethane steel wire HTD5M width 35
Mounting Accuracy	M≤0.1
Dust-proof design	Dust proofed

Accessorie

Misubishi Servo motor		
Output Power	Motor Model	Applicable Flange
500W	HF-KP13	F2
200W	HF-KP23	F0
400W	HF-KP43	F0

Panasonic Servo motor		
Output Power	Motor Model	Applicable Flange
100W	MSND011P1	F3
200W	MSND021P1	F1
400W	MSND041P1	F1

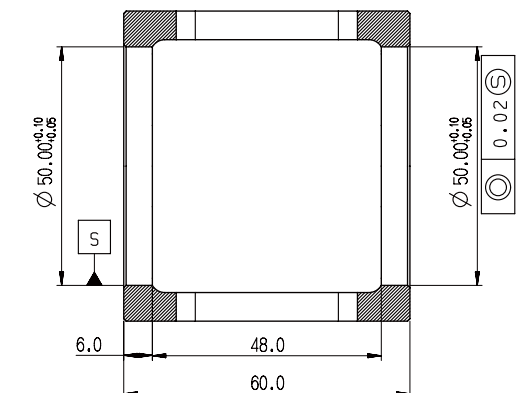
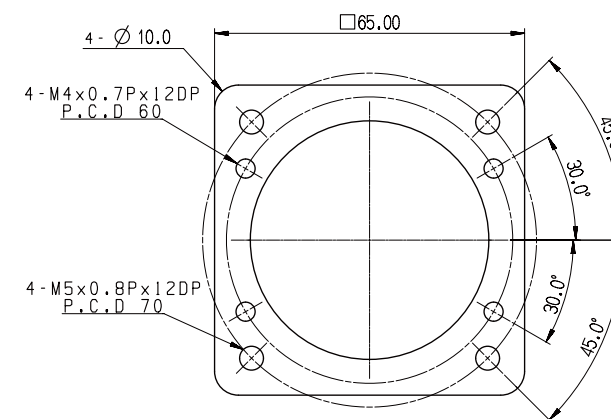
Anchuan Servo motor		
Output Power	Motor Model	Applicable Flange
100W	SGMAV-01	F2
200W	SGMAV-02	F0
400W	SGMAV-04	F0

Oriental Stepper motor		
Output Power	Motor Model	Applicable Flange
SK2 series	CSK264-AP	F6
	CSK266-AP	F6
	CSK268-AP	F6

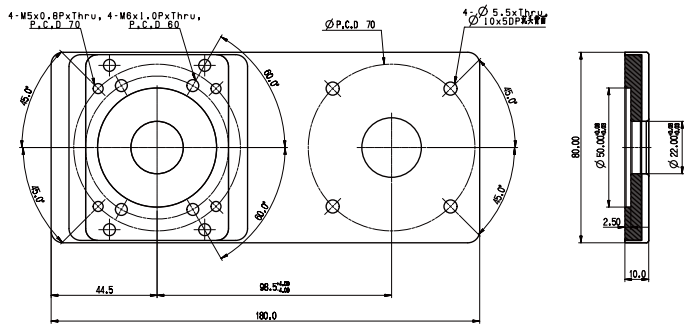
Oriental Stepper motor		
Output Power	Motor Model	Applicable Flange
CFK115 series	CFK564AP2	F5
	CFK566AP2	F5
	CFK569AP2	F5
	CFK566HAP2	F5
	CFK569HAP2	F5

Oriental Stepper motor		
Output Power	Motor Model	Applicable Flange
UMK2 series	UMK264A	F6
	UMK266A	F6
	UMK268A	F6

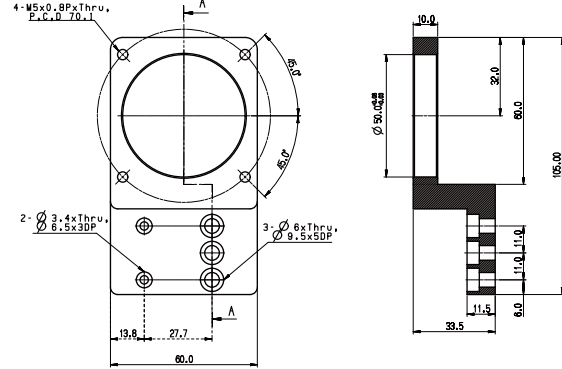
motor connection flange F0



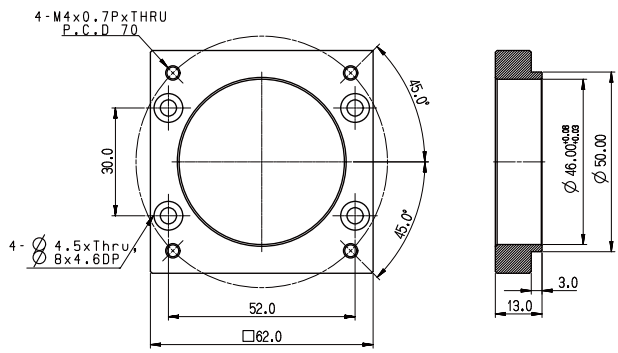
motor connection flange F0-1



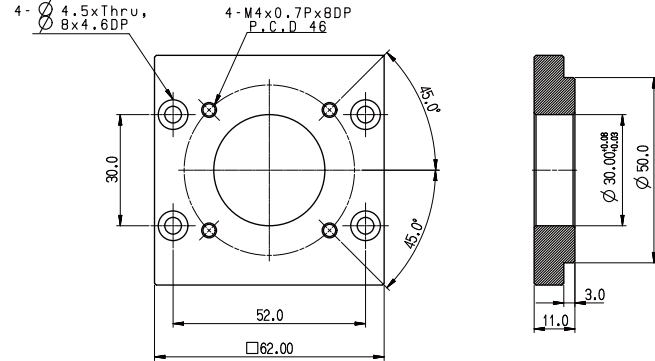
motor connection flange F0-2



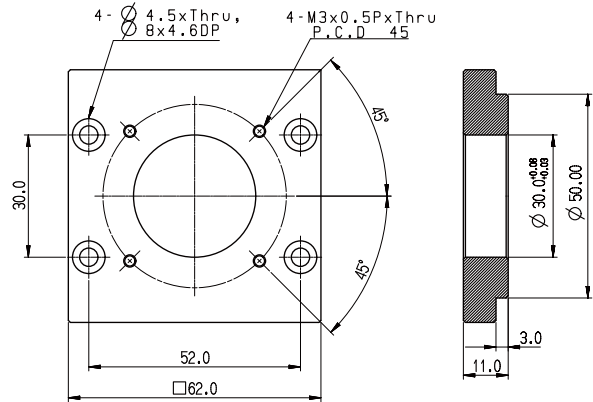
motor connection flange F1



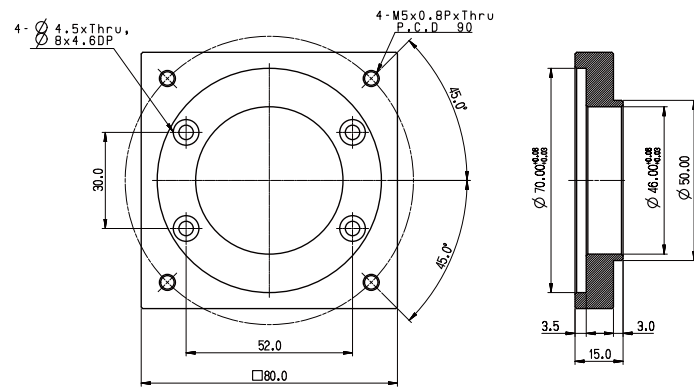
motor connection flange F2



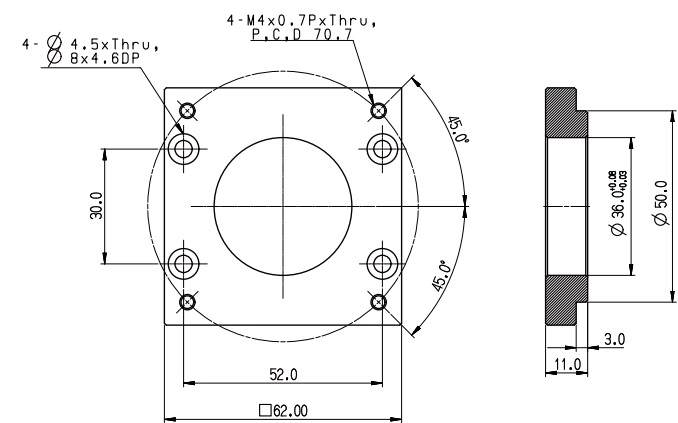
motor connection flange F3



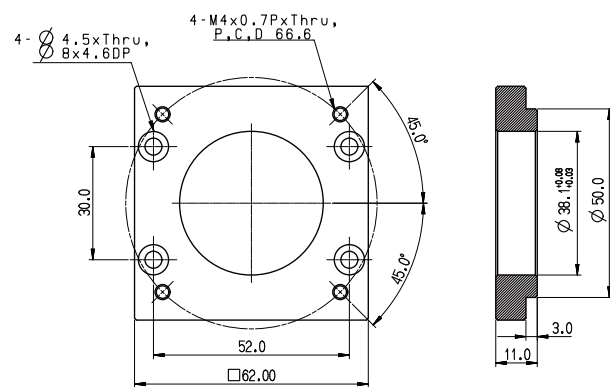
motor connection flange F4



motor connection flange F5



motor connection flange F6



Accessories



SLM60 XY connection board



SLM60 Z connection board



SLM60 motor support F0-2



SLM60 gantry frame XY



SLM60 2pcs block connection plate



Motor adaptor flange F-N



motor support F0



motor support F0-1